



# **Fraternity and Sorority Life Resource Manual**

# Table of Contents

|  |    |
|--|----|
| <b>Fraternity and Sorority Life Important Contacts</b> .....                   | 3  |
| <b>Organization/Chapter Contact Information</b> .....                          | 4  |
| <b>Letter from Fraternity and Sorority Director</b> .....                      | 5  |
| <b>Fraternity and Sorority Life Make Up</b> .....                              | 7  |
| <b>Fraternity and Sorority Life Office:</b> .....                              | 7  |
| <b>Fraternity and Sorority Life Executive Councils:</b> .....                  | 8  |
| <b>Fraternity and Sorority Life Chapters:</b> .....                            | 10 |
| <b>Fraternity and Sorority Life Members:</b> .....                             | 10 |
| <b>Fraternity and Sorority Life Staff Areas of Responsibility</b> .....        | 10 |
| <b>Charge of the Fraternity and Sorority Staff:</b> .....                      | 10 |
| <b>Important Dates</b> .....   | 12 |
| <b>Chapter Education Compliance Information</b> .....                          | 13 |
| <b>Membership Expectations</b> .....   | 13 |
| <b>Michigan State University Policies</b> .....                                | 14 |
| <b>Fraternity and Sorority Life Operational Guidelines</b> .....               | 14 |
| <b>Fraternity and Sorority Life Programming Fee</b> .....                      | 16 |
| <b>Payment</b> .....   | 16 |
| <b>Council and Chapter Leadership Information</b> .....                        | 19 |
| <b>Fraternity President Contact Information</b> .....                          | 19 |
| <b>Sorority President Contact Information</b> .....                            | 19 |
| <b>Multicultural Greek Council Executive Board Contact Information</b> .....   | 19 |
| <b>Interfraternity Council Executive Board Contact Information</b> .....       | 19 |
| <b>National Pan-Hellenic Council Executive Board Contact Information</b> ..... | 19 |
| <b>Panhellenic Council Executive Board Contact Information</b> .....           | 19 |
| <b>Fraternity and Sorority Chapter Structure Information</b> .....             | 19 |
| <b>Academic Break Procedure for Organization Structures</b> .....              | 20 |
| <b>Roster Submission Instructions</b> .....                                    | 21 |
| <b>Appendices</b> .....  | 22 |
| <b>Commonly Used Fraternity and Sorority Life Terms</b> .....                  | 22 |
| <b>Resource Guide</b> .....  | 25 |

## Fraternity and Sorority Life Important Contacts

### **ShirDonna Y. Lawrence, Ph.D.**

Director of Fraternity and Sorority Life

Email: lawre396@msu.edu

Work: 517-884-4070

Cell: 517-515-3310

### **Elana Levy**

Assistant Director of Fraternity and Sorority Life

Email: levyelan@msu.edu

Work: 517-432-3466

### **Hayley Jones**

Coordinator of Fraternity and Sorority Life

Email: jonesh23@msu.edu

Work: 517-353-3998

### **Michigan State University Police Department**

Emergency: 911

Non-Emergency: 517-355-2221

### **East Lansing Police Department**

Jacey Kingsbury- ELPD FSL Liaison

[jkingsbury@cityofeastlansing.com](mailto:jkingsbury@cityofeastlansing.com)

(517) 351-4220 (Non-emergency Number)

## Organization/Chapter Contact Information

| <b>Position</b>                               | <b>Name</b> | <b>Phone Number</b> |
|---|-------------|---------------------|
| <b>Chapter President</b>                      |             |                     |
| <b>Chapter Vice President</b>                 |             |                     |
| <b>Chapter Advisor</b>                        |             |                     |
| <b>Regional/National Headquarters Contact</b> |             |                     |
| <b>House Manger</b>                           |             |                     |
| <b>House Director</b>                         |             |                     |
| <b>Other</b>                                  |             |                     |

## Letter from Fraternity and Sorority Director

Dear Michigan State Fraternity and Sorority Community,

Fraternal and sororal organizations' deep connection to a university as well as their inherent influence creates opportunity for these organizations to drive the conversation and forward progress of university initiatives and overall civic engagement. Directing this potential toward mutually beneficial outcomes for both students and the university underscores the charge of those in leadership of our organizations.

Purpose, passion, siblinghood defines the unique experience of membership in a fraternity or sorority. I say this because it is important to know and understand the purpose of the organizations for which you are members. Knowing this and believing this will cause you to hold up the values of your organization, and be inclined to support your fellow brothers, sisters, and siblings.

"Passion is not friendly. It is arrogant, superbly contemptuous of all that is not itself, and, as the very definition of passion implies the impulse to freedom, it has a might intimidating power. It contains a challenge. It contains an unspeakable hope." -James Baldwin

You all share a common experience in that you represent something larger than yourselves. Therefore, I implore you to attack this experience with passion. Give all that you are able. Volunteer before you are asked. Do the right thing though it may not be popular. Everything you do has the possibility to impact your organization: good or bad. Passion is about your ability to see the larger picture and figure out how you fit into that picture. You make the letters; the letters don't make you. How will you use your time and talents to amplify the positive impact of your fraternity or sorority. I am excited to see what this will be!

"I do not believe that the accident of birth makes people sisters and brothers. It makes them siblings. Gives them mutuality of parentage. Sisterhood and brotherhood are conditions at which people must work. It's a serious matter. You compromise, you give, you take, you stand firm, and you're relentless...And it is an investment." - Maya Angelou

Sisterhood and brotherhood do not happen overnight. You must work at it. You must be willing to be vulnerable. You must be willing to be open to new experiences and people you would have never engaged with before. You must be selfless.

Sisterhood or brotherhood is not confined to any physical space. It is the embodiment of love, support, and care that spans time and space.

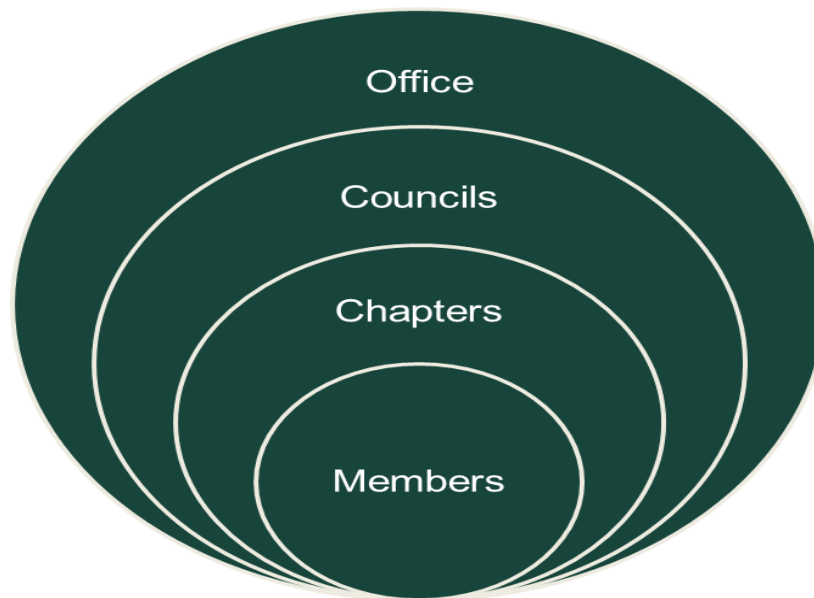
Sincerely,

ShirDonna Y. Lawrence, Ph.D.  
Director, Fraternity and Sorority Life

January 2024

# **Fraternity and Sorority Life Structure and Purpose**

## Fraternity and Sorority Life Make Up



### Fraternity and Sorority Life Office:

#### *Programming/Chapter support*

- FSL staff provide support to HQs, chapters on campus.
- We support the individual goals of each organization through helping to find methods of collaboration with other fraternities and sororities and/or community and university partners
- We are not a disciplinary body or office. While we do support our chapters should they find themselves in precarious situations, Fraternity and Sorority Life does not provide sanctions. Those are through councils or the Office of Student Support and Accountability

#### *Education/Training*

- We are responsible for developing and implementing and education and training opportunities to support the betterment of the fraternal and sororal experience

#### *Events/Programs*

- Fraternity and Sorority Life Office supports our councils in hosting programs and events that both forward the mission of our office, also to increase access to the fraternity and sorority experience

#### *Liaise Between University and Community Partners*

## Fraternity and Sorority Life Executive Councils:

### National Pan-Hellenic Council (NPHC):

- A collaborative umbrella council composed of historically African American fraternities and sororities also referred to as Black Greek Letter Organizations (BGLOs). The NPHC was formed as a permanent organization on May 10, 1930, on the campus of Howard University, in Washington, D.C.
- The council promotes interaction through forums, meetings, and other media for the exchange of information and engages in cooperative programming and initiatives through various activities and functions.
- Each constituent member organization determines its own strategic direction and program agenda. The primary purpose and focus of member organizations remains camaraderie and academic excellence for its members and service to the communities they serve. Each promotes community awareness and action through educational, economic, and cultural service activities.



### Interfraternity Conference (IFC):

- Founded in 1909
- The Interfraternity Council (IFC) is the local governing body for National Interfraternity Conference fraternity chapters at the University of Michigan. IFC works to promote the highest ideals of scholarship, leadership, service and fraternalism among its member organizations.
- The Interfraternity Council exists to advance conditions conducive to the success of its member chapters and to promote the progress of the fraternity experience. With this aim, the IFC actively encourages interfraternalism and collaboration with other fraternity/sorority governing councils and student governance bodies. Maintaining a positive working relationship and partnership with the campus administration, alumni, NIC and inter/national headquarters of member chapters is critical toward elevating the role of the IFC.





### Multicultural Greek Council (MGC):

- The Multicultural Greek Council is an umbrella council for a coalition of Multicultural Greek-letter organizations (MGLOs) established in 1998. The purpose MGC is to provide a forum that allows for the free exchange of ideas, programs, and services between its constituent fraternities and sororities; to promote the awareness of multicultural diversity within collegiate institutions, their surrounding communities, and the greater community-at-large, and to support and promote the works of its member organizations.
- The Multicultural Greek Council promotes multiculturalism by advocating for justice and equity, cultivating interfraternal relationships, and empowering its member organizations.
- Multiculturalism as not only diversity of membership, but a concrete commitment to acknowledge and celebrate all cultures equally through our programming, public service outreach efforts and community education.



### Panhellenic Council (PC)

- The **National Panhellenic Conference (NPC)** is an umbrella organization for 26 (inter)national women's sororities throughout the United States and Canada. Each member group is autonomous as a social, Greek-letter society of college women and alumnae.
- The National Panhellenic Conference provides guidelines and resources for its members and serves as the national voice on contemporary issues of sorority life. Founded in 1902, NPC is one of the oldest and largest women's membership organizations, representing more than 4 million women at over 650 college/university campuses and 4,600 local alumnae chapters in the U.S. and Canada.
- The organization holds a philosophy that it is a conference, not a congress, as it enacts no legislation and only regulates its own meetings. Other than basic agreements which its groups must unanimously vote to



follow, NPC confines itself to recommendations and advice and acts as a court of final appeal in any College Panhellenic difficulty. One of its services is providing advisors for college and alumnae Panhellenic organizations.

### Fraternity and Sorority Life Chapters:

A local group of the larger (inter)national organization, designated by a given name.

### Fraternity and Sorority Life Members:

A fraternity or sorority member is a part of a brotherhood or sisterhood, or siblinghood formed around common goals and aspirations. These individuals make a commitment to each other for life. The members that form a fraternity or sorority share their efforts, friendship, and knowledge.

## Fraternity and Sorority Life Staff Areas of Responsibility

ShirDonna:

- Staff oversight as well as serving as the liaison between Fraternity and Sorority Life the larger MSU and East Lansing community.
- Strategic planning, development and implementation related to bettering the fraternal experience and connecting the FSL experience to MSU and SLE university and divisional goals
- Provide advisement to the MGC

Elana:

- Provides administrative leadership in tasks such as FSL scorecards and roster management
- Coordinates events and programs
- Provides intensive advisement to NPHC and PC programs and events

Hayley

- Provides leadership and coordination of major events and programs hosted by joint councils and FSL office
- Provides intensive advisement to IFC and Order of Omega

### Charge of the Fraternity and Sorority Staff:

Through collaboration with students, international organizations, alumni, and the Division of Student Life and Engagement, Fraternity and Sorority Life at Michigan State University fosters a holistic college experience by providing opportunities for scholarship, leadership, and community service.

These three opportunities have been outlined by our unit as the foundation of healthy and successful fraternity and sorority chapters and advance the missions of each of our chapters. The defining opportunities are in line with the Division of Student Leadership and Engagement and furthers the values and goals of the Michigan State University.

# **Fraternity and Sorority Life Requirements**

## Important Dates

| Form/Document                        | Location                     | Date   |
|--------------------------------------|------------------------------|--|
| Chapter Roster Adjustments Completed |                              | Fall Semester: October 1 <sup>st</sup><br>Spring Semester: March 1 <sup>st</sup>           |
| FSL Programming Fee Assessed         | Assessed via Councils        | Fall Semester: October 1 <sup>st</sup><br>Spring Semester: March 1 <sup>st</sup>           |
| Chapter Officer Transition Form      | Involve@State                | First Day of Spring Semester<br>(Or change in leadership occurs)                           |
| Summer Chapter Housing Form          | Involve@State                | Last day of Spring Semester  |
| Community Grade Reports Released     | Emailed to Chapter President | Fall Semester Info: February 1 <sup>st</sup><br>Spring Semester Info: July 1 <sup>st</sup> |
| Membership Intake Packet             |                              | See Packet   |

## Chapter Education Compliance Information

| Date & Time   | Topic  | Facilitator                           | Audience                                       |
|---------------|--|---------------------------------------|--|
| January       | Fraternity and Sorority Life Retreat           | FSL Staff                             | Council Officers, Chapter Presidents, Advisors |
| February      | Association of Fraternal Leadership and Values | Conference Staff and National Experts | Council Officers                               |
| Each Semester | Greeks Take the Lead                           | Prevention, Outreach and Education    | All Members                                    |
| August        | Fraternity and Sorority Life Kick Off          | FSL Staff/ Campus Partners            | Council Officers, Chapter Presidents           |

**Fraternity and Sorority Life Retreat:** Training hosted at the start of the spring semester to provide council and chapter leadership with necessary information and resources. This opportunity also serves as a space for networking and interfacing with university and community partners.

**Greeks Take the Lead:** The Greeks Take the Lead Program is a mandatory workshop series for all fraternity and sorority chapters that are currently registered student organizations (RSOs) or are hoping to become an RSO. The Greeks Take the Lead Program serves as a way to help fraternity and sorority students feel empowered by providing further education on how they can intervene and end sexual violence in their chapters and greater community. All chapter presidents and a council member involved in risk reduction (or a leadership member interested in risk reduction) participate in leadership-based interactive trainings and all general members are required to choose a workshop focused on a specialized topic.

**Fraternity and Sorority Life Kick Off:** Training hosted at the start of the fall semester to provide council and chapter leadership with necessary information and resources. This opportunity also serves as a space for networking and interfacing with university and community partners.

## Membership Expectations

Operating as a Fraternity or Sorority at Michigan State University is a great privilege. With that privilege comes many benefits that we hope will help your organization to thrive. These benefits create opportunities for leadership, growth and development, healthy and safe environments, and the creation of an inclusive community. With these benefits and opportunities come certain expectations and responsibilities.

It is your responsibility as leadership for your organization to understand these policies and guidelines, including how to enact them within your own chapter. Lack of information is not an excuse for lack of compliance. If at any point you have questions about any of these policies or guidelines, please don't hesitate to reach out to any FSL staff.

It is the expectation that all organizations abide by both Michigan State University policies and Fraternity and Sorority Life operational guidelines. Those two sections are outlined below:

## Michigan State University Policies

- [Student Rights and Responsibilities](#)
- [MSU Student Organization Conduct Policies and Procedures](#)
- Events Policy
- Expansion and Return Policy
- Fraternity and Sorority Membership and Joining Policy
- Greek-letter organizations affiliated with the Interfraternity Council, Panhellenic Council, National Pan-Hellenic Council, or Multicultural Greek Council must abide by the conduct policies established by their respective governing body, as well as the SO Handbook.

## Fraternity and Sorority Life Operational Guidelines

- General Expectations
  - Follow the standards and trainings of your prospective organization and evaluate how they coincide with Michigan State University policies
  - Comply with:
    - University policies
    - Fraternity and Sorority-specific guidelines and policies
    - Council specific constitutions, bylaws, and guidelines
  - Chapters agree to:
    - Chapters to fully initiate their new members and hold any new member presentations/bid days by established deadline
    - Chapters will attend council meetings and financially support their governing council.
    - Chapter officers will read and understand the governing council's constitution and bylaws and guidelines and their individual chapter's constitution and bylaws.
    - Support Council programming
    - Presidents will inform the Fraternity and Sorority Life office of any emergencies or serious situations.

- Administrative Expectations Turn in required membership intake and/or recruitment information as relevant for your organization
  - Secure a chapter advisor that focuses on the daily operations of the chapter
  - Chapter will maintain accurate and up-to-date financial records at all times
  - Chapter will pay both FSL Programming Fee dues and council specific dues by the due date outlined or risk facing loss of organization recognition
  - Chapters will maintain an up-to-date roster with the Fraternity and Sorority Life office
    - These updates must be made during designated update periods
    - This roster will be used for all official University events (attendance, programming fee, disciplinary concerns, etc.)
  - Chapters will turn in the following for the FSL scorecard:
    - Number of service hours performed and who received the service at the end of each semester
    - Dollars raised for charity and who received it at the end of each semester
    - Assessment information for each chapter per Assessment Evaluation needs.
    - Chapters will turn in the Chapter Officer Transition Form after chapter elections
    - Utilize the Fraternity and Sorority Life web site for updates, calendar, forms, stats, etc.
    - Attentive to important dates and email updates
- Meetings/Trainings Expectations
  - Attend training sessions, education sessions, round tables, monthly President Meetings, etc.
  - Chapters to fully initiate their new members and hold any probates/bid days by established deadline
  - Chapter Presidents will have regularly scheduled meetings with their council advisor.
  - Council officers and Presidents will attend President meetings monthly.
  - Chapter presidents and council officers will attend beginning of semester trainings including Fraternity and Sorority Life Kickoff and Fraternity and Sorority Life Retreat
  - Position specific trainings (judicial board, new member educators, etc.)
  - Chapter officers will attend designated training sessions for Presidents or assign others to attend.
- Education Expectations
  - Complete required Greeks Take the Lead (GTTL) opportunities

## Fraternity and Sorority Life Programming Fee

### Interfraternity Council and Panhellenic Council Agreement:

Per the agreement with the Michigan State University, the Interfraternity and Panhellenic Councils will pay ten dollars per semester per member to Michigan State University (MSU). IFC will be charged a total of \$20,000.00 for the incurred expenses and continued support of the operations within the Fraternity & Sorority Life Office during the fall and spring semesters.

### Multicultural Greek Council Agreement:

Per the agreement with the Michigan State University, the Multicultural Greek Council will pay ten dollars per semester per member to Michigan State University (MSU). MGC will be charged a total of \$750.00 for the incurred expenses and continued support of the operations within the Fraternity & Sorority Life Office during the spring and fall semesters.

### National Pan-Hellenic Council Agreement:

Per the agreement with the Michigan State University, each National Pan-Hellenic Council will pay ten dollars per semester per member to Michigan State University (MSU). NPHC will be charged a total of \$1,000.00 for the incurred expenses and continued support of the operations within the Fraternity & Sorority Life Office during the fall and spring semesters.

## Payment

- Methods
  - Payments are due 10 business days following the invoice date
  - Payments can be made in the following ways:
    - By check payable to Michigan State University delivered or mailed to the following address:  
  
Michigan State University  
Attn: ShirDonna Lawrence  
Student Services Building  
556 E. Circle Dr., Suite 315  
East Lansing, MI 48824-1113
    - Transfer of Funds from your on-campus University Account. Please email Karen Wood at [woodk@msu.edu](mailto:woodk@msu.edu) to request a transfer of funds, providing the account number.
- Notices
  - FSL Programming Fees are separate from council dues. Your organization is responsible for paying both council dues and FSL programming fees



- Prepare for this payment. This fee will be assessed at the same time each semester and the amount of the fee per member will always be known in advance. Please make sure your budget reflects this payment
- This advance knowledge, as well as the reoccurring nature of the fee each semester is why payment plans are not offered for the FSL programming fee. If an emergency arises, you are welcome to contact FSL staff
- The FSL programming fee will be assessed on the following dates:
  - Fall Semester: October 1<sup>st</sup>
  - Spring Semester: March 1<sup>st</sup>
- Fee notice will be sent to council presidents and treasures on the specified dates of each semester
- Once invoices are assessed and sent, the number of members indicated on the invoice will not be changed and the amount due will not be adjusted
  - It is the responsibility of the chapter president to make sure their organization roster is up to date to make sure each organization is charged appropriately

# **Fraternity and Sorority Life Reference Information**

## Council and Chapter Leadership Information

Fraternity President Contact Information

[List of Fraternities](#)

Sorority President Contact Information

[List of Sororities](#)

Multicultural Greek Council Executive Board Contact Information

[Executive Board Contact Information](#)

Interfraternity Council Executive Board Contact Information

[Executive Board Contact Information](#)

National Pan-Hellenic Council Executive Board Contact Information

[Executive Board Contact Information](#)

Panhellenic Council Executive Board Contact Information

[Executive Board Contact Information](#)

## Fraternity and Sorority Chapter Structure Information

| Organization                 | Address             | Capacity |
|------------------------------|---------------------|----------|
| Alpha Chi Omega              | 243 Burcham Dr.     | 49       |
| Alpha Epsilon Pi (AEPi)      | 225 N. Harrison     | 37       |
| Alpha Gamma Rho (AGR)        | 432 Evergreen Ave.  |          |
| Alpha Kappa Psi (AKPsi)      | 123 Louis St.       | 12       |
| Alpha Omicron Pi             | 333 Charles St.     | 33       |
| Alpha Phi                    | 616 M.A.C. Ave.     | 50       |
| Alpha Sigma Phi (Alpha Sig)  | 131 Bogue St.       | 40       |
| Alpha Xi Delta               | 855 Grove St.       | 43       |
| Beta Theta Pi (Beta)         | 207 Bogue St.       | 20       |
| Chi Omega                    | 229 Burcham Dr.     | 47       |
| Delta Gamma                  | 365 N. Harrison Rd. | 41       |
| Delta Kappa Epsilon (Deke)   | 1148 E. Grand River | 31       |
| Delta Sigma Phi (Delta Sigs) | 1218 E. Grand River |          |
| FarmHouse                    | 151 Bogue St.       |          |

|                             |                                 |                              |
|-----------------------------|---------------------------------|------------------------------|
| Gamma Phi Beta              | 258 Michigan Ave.               | 40                           |
| Kappa Alpha Theta           | 303 Oakhill Ave.                | 42                           |
| Kappa Delta                 | 528 M.A.C. Ave.                 | 33                           |
| Kappa Kappa Gamma           | 605 M.A.C. Ave.                 | 45                           |
| Kappa Kappa Gamma           | 217 Beech St.                   | 0                            |
| Kappa Sigma                 | 335 Hillcrest Ave.              |                              |
| Phi Delta Theta (Phi Delt)  | 626 Cowley Ave.                 | 28                           |
| Phi Gamma Delta (FIJI)      | 729 E Grand River Ave.          | 35                           |
| Phi Kappa Psi (Phi Psi)     | 101 Woodmere Ave.               | 41                           |
| Phi Kappa Sigma (Phi Kapps) | 437 Abbott Rd.                  |                              |
| Phi Kappa Tau (Phi Tau)     | 120 Spartan Ave.                |                              |
| Pi Beta Phi                 | 343 N. Harrison Rd.             | 21                           |
| Pi Kappa Alpha (Pike)       | 301 Charles St.                 | 35                           |
| Pi Kappa Phi (Pi Kapps)     | 520 Linden                      | 27                           |
| Psi Upsilon (Psi U)         | 810 West Grand River Ave.       | 24                           |
| Sigma Alpha Epsilon (SAE)   | 342 N. Harrison Road            | 49                           |
| Sigma Alpha Mu (Sammy's)    | 217 Bogue St.                   | 10                           |
| Sigma Delta Tau             | 427 M.A.C. Ave.                 | 23                           |
| Sigma Kappa                 | 518 M.A.C. Ave.                 | 44                           |
| Sigma Nu (SNU)              | 110 Oakhill Ave                 | 18                           |
| Sigma Pi                    | 330 N. Harrison                 |                              |
| Sigma Tau Gamma (STG)       | 710 Oak Street & 312 N Harrison | 7 at Oak, 8 at Harrison = 15 |
| Tau Kappa Epsilon (Tekes)   | 334 Michigan Ave                |                              |
| Theta Chi                   | 453 Abbott Road                 | 27                           |
| Theta Delta Chi (TDX)       | 445 Abbot Road                  |                              |
| Triangle                    | 242 N. Harrison St.             |                              |
| Zeta Psi                    | 227 Bogue St.                   | 16                           |
| Zeta Tau Alpha              | 639 M.A.C. Ave.                 | 46                           |

***\*Please note that chapter structures are owned and operated by individual organizations and not Michigan State University Fraternity and Sorority Life. The information provided is information provided from each organization.***

### Academic Break Procedure for Organization Structures

During university academic breaks, Fraternity and Sorority Life must be provided with contact information for those residents that will stay in the home over the following academic breaks:

- Winter Break
- Spring Break
- Summer Break

Chapter leadership should send the following information to FSL Staff:

- Name
- University Email
- Phone number
- Emergency contact information for each resident (name, phone number, email)
- The information for those staying should be submitted via email to Fraternity and Sorority Life at least 2 weeks prior to the beginning of the break.
  - Send to:
    - ShirDonna Lawrence
    - lawre396@msu.edu
- The chapter must be in good standing with the university which includes:
  - All fire safety requirements have been met during the regular semester inspection

## Roster Submission Instructions

Each organization has a folder where you will find your past rosters and your current semester roster.

**Spring 2024:** Chapter rosters are due on February 12, 2024 by 12PM EST.

Instructions:

- Please open your roster and remove members who are no longer active and or graduated, and/or add in new members once you have them.
  - Please make sure to move your new members from the bottom of the roster to the top.
- Please update your Spring '24 roster **fully**, and make sure all blank cells are filled in.
- This semester we are asking that you add in the **list of your executive board members**.
  - You will see a second tab named "Exec Team" and I have included what I have so far.
  - Please also spell out all acronyms or shortened positions. Also, don't forget to add in your DEIB and SALLY positions!
- Please verify all MSU emails before you finalize your roster. All student email addresses submitted must end in @msu.edu.
  - How to verify: Send an email to everyone on your roster. If emails bounce back, they are incorrect, and you can follow up accordingly.
- Please have your Chapter Advisor review your roster as well to make sure it is correct. If they do not have access, please connect and share screen via zoom or a video app.
- Please add the date of update at the top of your roster in order for the staff to know you have made changes.

After February 12, 2024 please submit changes to your roster in this [form](#). We will be changing your access to view only so we can make necessary updates to the rosters as staff members. Also, after

**January 2024**

Feb. 12, FSL and Prevention, Outreach and Education will be adding your members' Greeks Take the Lead completion statuses to rosters and will update throughout the semester.

Link to Rosters (need an MSU email to login):

IFC Rosters: [IFC](#)

MGC Rosters: [MGC](#)

NPHC Rosters: [NPHC](#)

If you have questions regarding this process or your roster, please contact Elana Levy via [levyelan@msu.edu](mailto:levyelan@msu.edu).

## Appendices

### Commonly Used Fraternity and Sorority Life Terms

**Active:** a member who has been initiated into lifelong fraternity or sorority membership and is active at the collegiate level.

**Alumni/ae:** initiated fraternity or sorority members who have graduated from college.

**Bid:** a formal invitation to join a particular sorority or fraternity.

**Big brother/Big sister:** an active member who serves as a mentor to a new member during their new member program.

**Call:** a vocal sound used by members of NPHC and MGC organizations to acknowledge one another.

**Chapter:** the local group of a larger national organization designated by a special name or Greek letters.

**Continuous open bidding/recruitment:** an informal recruitment process that takes place after the conclusion of formal panhellenic recruitment.

**Formal Panhellenic Recruitment:** a series of events given by each sorority that are designed to introduce sorority life to potential new members. Formal recruitment is scheduled by the panhellenic council.

**House Director:** a person hired by the housing corporation board to live in the chapter house and supervise the facility.

**IFC Recruitment:** a week-long period in which fraternities and potential new members become acquainted.

**Initiation:** the formal ceremony that marks the beginning of active membership. Each chapter has a different set of initiation requirements.

**Interfraternity Council (IFC):** The Interfraternity Council (IFC) is the local governing body for National Interfraternity Conference fraternity chapters at the University of Michigan.

**International/national headquarters:** the central organization of a particular fraternity or sorority.

**Legacy:** a prospective member whose grandparent, parent, or sibling is an alumnus of, or active in, a particular fraternity or sorority. (please note that most organizations are not obligated to pledge or extend bids to legacies.)

**Line:** term used to describe the members of a new member class in NPHC and MGC organizations.

**Membership intake:** the process that NPHC and MGC chapters utilize to recruit, interview, select, and initiate new members. The period of membership intake varies, but cannot exceed eight weeks.

**Multicultural Greek Council (MGC):** The Multicultural Greek Council is an umbrella council for a coalition of Multicultural Greek-letter organizations (MGLOs)

**National Pan-Hellenic Council (NPHC):** the governing body for the 9 historically Black fraternities and sororities. This is also the name of the national governing body and is sometimes referred to as the divine nine.

**Neophyte:** a member of the last line to cross in the local chapter of a NPHC or MGC organization.

**New Member/Pledge:** a member of a fraternity or sorority going through the new member education/pledging process.

**New Member Education Program:** a period of education when new members learn the history, ideals, and values of fraternity and sorority life. The timeframe varies, but cannot exceed eight weeks.

**New Member Educator/Membership Intake Chair:** the liaison between new members and the chapter. This person is responsible for implementing and monitoring the new member program and preparing new members for initiation.

**Order of Omega:** order of omega is a leadership honor society for members of fraternities and sororities.

**Panhellenic Council:** the governing body for the 8 national panhellenic conference sororities/women's fraternities.

**Philanthropy:** a charitable fundraiser sponsored by a sorority or fraternity.

**Potential new member (pnm):** a college student participating in recruitment.

**Presentation show/probate:** the introduction of a line to campus. This is usually the first full step show/ exhibition performed by members of the new member class of MGC or NPHC organization.

**Prophyte:** a neophyte becomes a prophyte after another line is initiated.

**Recruitment/rush chair:** an active member of a sorority or fraternity who is in charge of recruitment efforts for the chapter.

**Recruitment counselor:** a trained Panhellenic or Interfraternity Council member who has disassociated herself from her chapter during recruitment in order to counsel and assist potential new members during recruitment.

**Social:** a get-together with another group for a party, dinner, or fun occasion.

**Stroll or party hop:** a line dance by members of NPHC or MGC organizations.

**Step:** synchronized movements using hands, feet, and props (i.e. Canes) to create rhythmic beats. Seen at step shows performed by NPHC organizations.



# Fraternity & Sorority Life

## REPORTING

### EMERGENCY

Police, Fire, Ambulance: Call 911 Available 24 Hours

### Office of Institutional Equity

(517) 353-3922 [oie.msu.edu](http://oie.msu.edu)

### MSU Police Department

911 or (517) 355-2221 1120 Red Cedar Rd., East  
[lansing.police.msu.edu](http://lansing.police.msu.edu)

## HEALTH CARE

MSU Sexual Assault Health Care Program,  
Sexual Assault Nurse Examiner (SANE) on staff Student  
Services Building, Rm. 207 (517) 355-3551  
[centerforsurvivors.msu.edu/msu-sexualassault-healthcare-program/](http://centerforsurvivors.msu.edu/msu-sexualassault-healthcare-program/) \*Services are free within the first 5 days\*

### Student Health Services

Neighborhood Clinics Available For Appointments: (517) 353-4660 [olin.healthcenter.msu.edu](http://olin.healthcenter.msu.edu)

### Sparrow Hospital

Sexual Assault Nurse Examiner (SANE) on staff Emergency  
Room Available 24/7 (517) 364-1000 1215 E. Michigan Ave,  
[lansing.sparrow.org](http://lansing.sparrow.org)

### Planned Parenthood

(517) 351-0550 300 N Clippert St, Lansing  
[plannedparenthood.org](http://plannedparenthood.org)

## COMMUNITY

### Personal Protection Order Office

(517) 483-6545 313 W. Kalamazoo St., Lansing

### End Violent Encounters (EVE)

24-hour hotline and support for survivors of domestic  
violence, elder abuse, and sexual assault 24-Hour Hotline:  
(517) 372-5572 (517) 372-5976 [eveinc.org](http://eveinc.org)

### Women's Center of Greater Lansing

Counseling and services for survivors of domestic  
violence and/or sexual assault. (517) 372-9163 1710-1712 E.  
Michigan, Lansing, MI [womenscenterofgreaterlansing.org](http://womenscenterofgreaterlansing.org)

### Michigan Coalition to End Domestic and Sexual Violence

24-Hour Hotline: (855) 864-2374 [mcedsv.org](http://mcedsv.org)

### Capital Area Response Effort (CARE)

Information, referrals, and advocacy for survivors of  
domestic violence (517) 272-7436 2500 S. Washington,  
Lansing [lansingmi.gov/care](http://lansingmi.gov/care)

### The Trevor Project

24-hour LGBTQ+ crisis lifeline, chat, and text 1-866-488-7386 or Text START to 678-678 [thetrevorproject.org/get-help-now](http://thetrevorproject.org/get-help-now)

## CAMPUS

### ASMSU Safe Ride

A free alternative to walking alone after dark. (517) 884-8069  
Available through the TransLoc Rider App  
[asmsu.msu.edu/home/services/safe-ride/](http://asmsu.msu.edu/home/services/safe-ride/)

### Resource Center for Persons with Disabilities (RCPD)

(517) 884-7273 Bessey Hall, Rm. 120 [rcpd.msu.edu](http://rcpd.msu.edu)

### ASMSU Student Rights Advocates

(517) 884-1253 [asmsu.msu.edu/home/services/studentrights-advocates/](http://asmsu.msu.edu/home/services/studentrights-advocates/)

### Office for International Students and Scholars (OISS)

(517) 353-1720 International Center, Rm 105 [oiss.msu.edu](http://oiss.msu.edu)

### Undocumented Student Resources

[undocumented.msu.edu](http://undocumented.msu.edu)

### Migrant Student Services

234 Wilson Rd, Holden Hall, Room C249 (517) 432-9900  
[mss.msu.edu](http://mss.msu.edu)

## Mandatory Reporters

All University employees, other than those listed below, have reporting obligation when the employee becomes aware of relationship violence, stalking, or sexual misconduct that involves a member of the University community (faculty, staff, or student) or occurring at a University event or on University property.

## EXEMPT FROM REPORTING

- MSU Center for Survivors  
24/7 hotline: (517) 372-6666
- MSU Claimant and Respondent Representatives  
[RespondentAdvisors@msu.edu](mailto:RespondentAdvisors@msu.edu)
- MSU Counseling and Psychiatric Services (CAPS)  
(517) 355-8270
- MSU Safe Place  
(517) 355-1100 - [noabuse@msu.edu](mailto:noabuse@msu.edu) - [safespace.msu.edu](http://safespace.msu.edu)
- MSU Gender and Sexuality Campus Center (GSCC)  
M-F 10am-5pm: 517-353-9520
- MSU Prevention, Outreach, and Education (POE)  
[empower@msu.edu](mailto:empower@msu.edu)
- MSU Student Health Services  
(517) 884-6546
- University Ombudsperson  
(517) 353-8830

## EMERGENCY CALL

# 911

## Michigan's Sexual Assault Hotline

### (855) 864-2374



**Michigan State University  
Fraternity and Sorority Life**